

“Laying the foundations for a lifetime of learning”

Newsletter

12th January 2018

Dear Parents and Carers,

Happy New Year to you all!

Welcome back. I hope that you all had a lovely Christmas with family and friends.

On behalf of the staff I would like to thank you for the lovely Christmas cards and gifts that we received from you, it was more than kind of you to think of us at such a busy and expensive time for families.

This term's topics

The teachers will soon be sending out letters explaining the topic for the term and how you can continue to support your child's learning at home. Please look out for them in your child's reading bag and on the school's website.

Creativity

Creativity is the theme for our collective worship for the term. Each of us is creative and we all have different gifts and abilities. Some of us love to paint, others to cook: some like to make music, others to build models. Over the coming weeks we will explore how we can share and celebrate each other's creative gifts.

Collective Worship

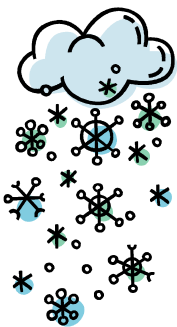
We would like to invite you to join us at one of our Friday Collective Worship, starting at 10am. It is a special time at the end of the school week when we come together to celebrate the pupils' achievements both in and out of school.

The parents of pupils in Maple and Willow are invited on Friday 26th January, Chestnut parents are invited to join us on Friday 23rd February and we look forward to seeing Oak parents on Friday 23rd March.

Please let Mrs Templeton know if you wish to join us so we know how many chairs to put out.

Procedure in case of School Closure due to bad weather

Our primary means of informing you of an emergency closure is through our **text messaging facility***.



If snow has fallen overnight, please make sure that **mobile phones** are positioned where a signal can be received if possible and check regularly for messages from 7a.m. onwards. We will also post the information on our website www.ampneycrucis.gloucs.sch.uk.

In addition, Gloucestershire County Council operates a “**Closed Schools**” **website**, although it may take a while for the information to appear if a lot of schools are closed:

www.gloucestershire.gov.uk/closedschools

****Please keep us updated on changes to your mobile contact details and remember that texts only go to the Priority 1 contact you have given us (usually mum).***



Problem solver of the week

This term we are celebrating those pupils who have used and applied their problem solving skills across the curriculum.

Willow - Eliza

Chestnut - Sasha

Oak - Cosmo

Yours sincerely,

Anne-Marie Wilkie

SCHOOL DIARY

Please note –dates/details may be added or amended (**in red**), so please check every newsletter

JANUARY

Friday 26 th	Maple & Willow parents invited to collective worship, 10am
Saturday 27 th	Chilli Quiz Night

FEBRUARY

Friday 23 rd	Chestnut parents invited to collective worship, 10am
w/c Monday 26 th	Writing Week

MARCH

Thursday 1 st	World Book Day – come to school dressed as your favourite book character
Monday 12 th	Parents' Evening (appointment sheets as yet unavailable)
Tuesday 13 th	Parents' Evening (appointment sheets as yet unavailable)
Friday 23 rd	Oak class parents invited to collective worship, 10am
Monday 26 th	Oak Class Swimming Gala (more information nearer the time)
Wednesday 28 th	Easter Service in the church, 9.30am
Thursday 29 th	Last day of the Spring Term, school finishes 1.30pm



www.ampneycrucis.gloucs.sch.uk

easyfundraising
.org.uk

What's on in our local parishes? Go to www.ampney.info